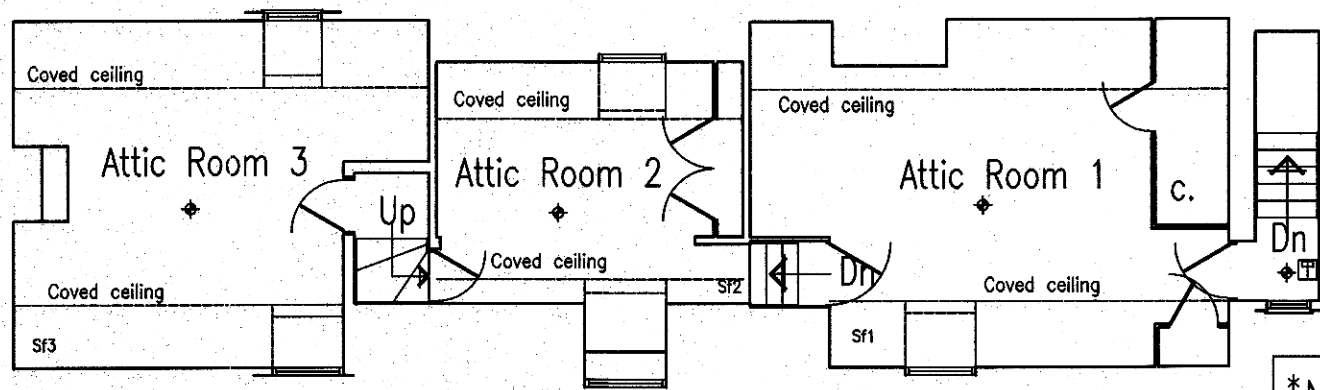


# FILBY HALL, MAIN ROAD, FILBY, GT YARMOUTH, NORFOLK

## PROPOSED PLANS

Doors marked 'FD' are existing doors which are to be upgraded to FD30s specification. This is to be achieved with the minimum amount of disruption to the existing door fabric as possible. Doors are to be treated with a suitable fire retardant paint or varnish to the required thickness in order to achieve half hour fire protection in compliance with BS476; Pts 6&7. Application to be in strict accordance with the manufacturers specification and a certificate of supply to be provided by the paint manufacturer.

All new fire doors are to be hung in strict accordance with manufacturers details and recommendations and be hung on 1.5 pairs of hinges complying to annex B of BS EN 1935. Fire doors are to be provided in locations as indicated and specified on plan. All fire doors to be identified by their performance under test to BS 476;Pt22 and to be fitted with an automatic self closing device except for fire doors to cupboards and to service ducts which are normally kept locked shut.

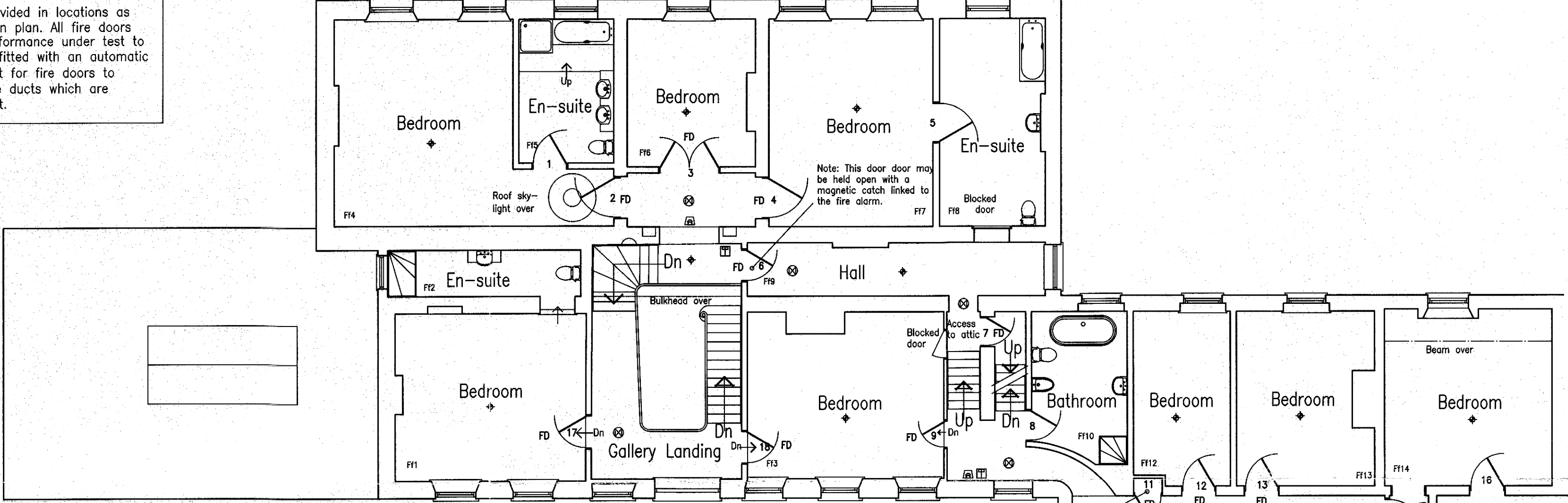


Second Floor Plan  
1:100

\*NOTE: The second floor is for owner private use only and must not be used in connection with the childrens home.

- FIRE PREVENTION SYMBOLS
- Emergency Lighting Luminaire
  - Manual Fire Alarm Call Point
  - Fire Alarm Control Panel
  - Exit Notice
  - Fire Door Keep Locked Shut
  - Fire Alarm Sounder Bell
  - Fire Blanket
  - Carbon Dioxide Extinguisher

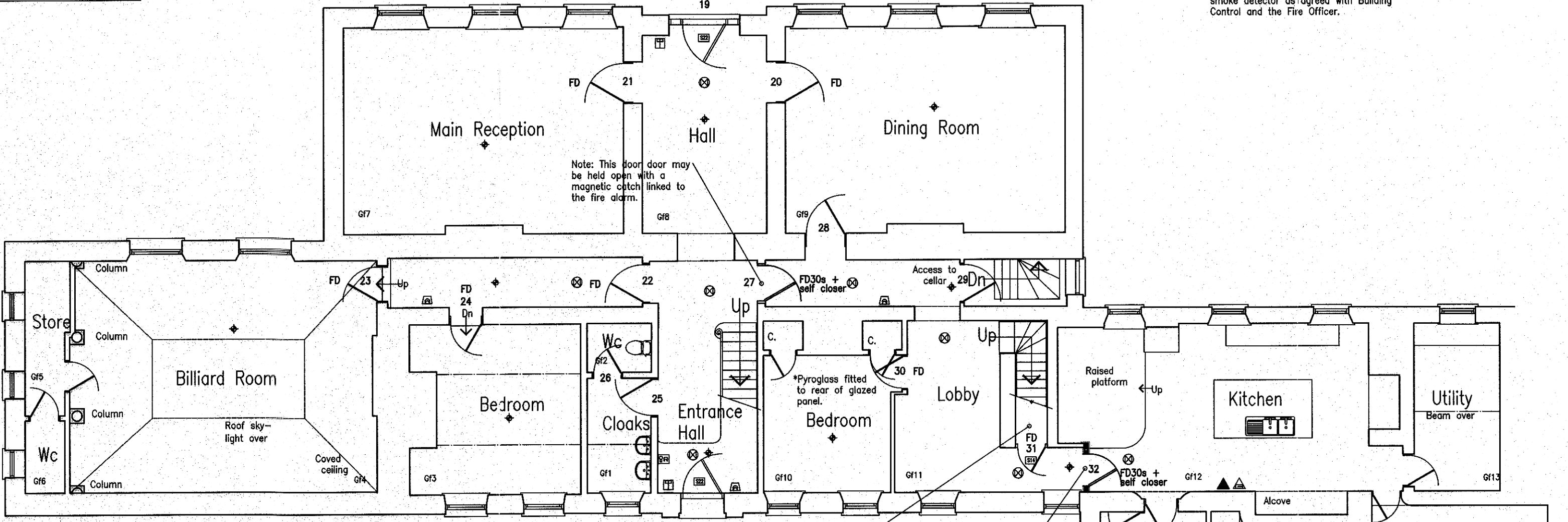
\* NOTE: Glazed screen above door 3 is to be fitted with 12.5mm plaster-board in a timber frame.



First Floor Plan  
1:100

NOTE: ALL ESCAPE ROUTES THROUGH HALLWAYS AND CORRIDORS ARE TO BE KEPT FIRE STERILE AT ALL TIMES. THE PLACEMENT OF FURNITURE SHOULD BE AVOIDED IN NARROW SECTIONS OF HALLWAY.

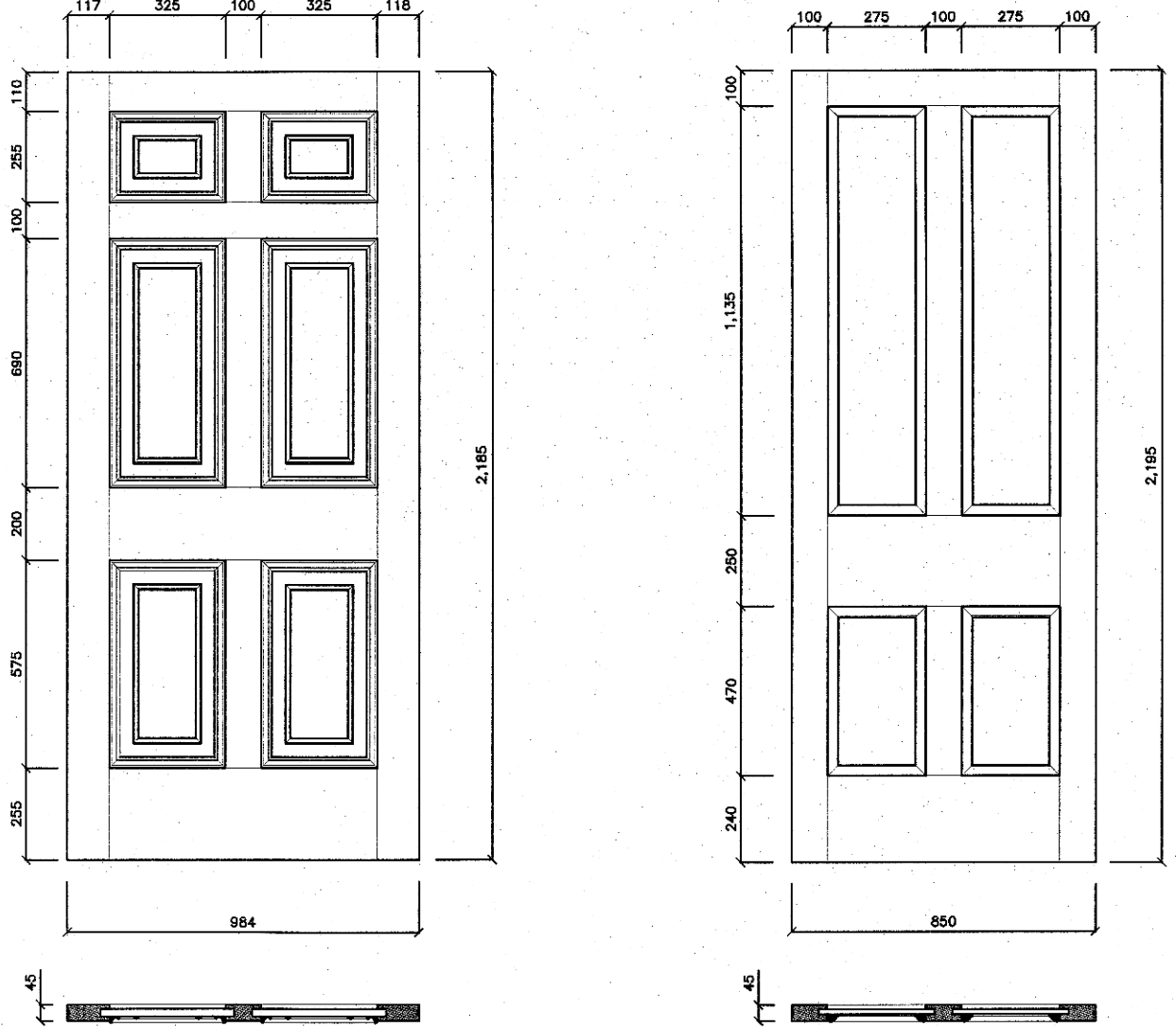
Location of smoke detector unit linked to L2+ alarm system. Detector to be optical smoke detector as agreed with Building Control and the Fire Officer.



Ground Floor Plan  
1:100

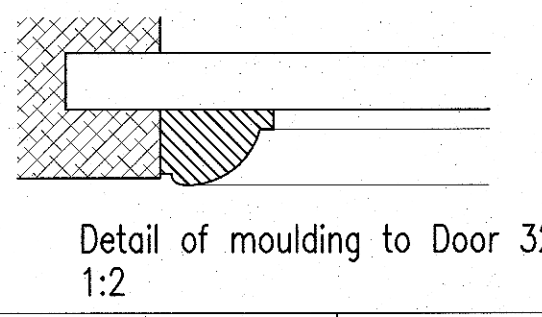
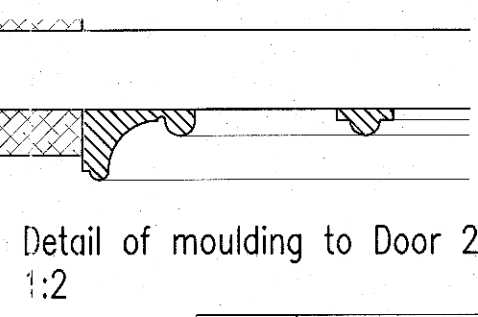
EMERGENCY LIGHTING  
Emergency lighting to be installed in premises to fulfill the following functions:  
a) To indicate clearly all the escape routes;  
b) to provide illumination along such routes (including hazards such as stairs, ramps etc.) to allow safe movement towards, through and away from the exits provided;  
c) to ensure that fire alarm call points, fire fighting equipment and exit signs provided along escape routes can be readily located.  
In addition to escape routes, the following areas should be provided with emergency lighting:  
1) External areas in the immediate vicinity of exits;  
2) control and plant rooms.  
Emergency lighting to be either maintained or non maintained systems and to be installed in strict accordance with manufacturers details. System to comply with the recommendations of BS 5266: pt1;2005. Emergency lighting to illuminate along the centre line of the escape route of not less than 0.2lux and this level should be provided within 5 seconds of normal lighting failure. With the exception that in premises likely to be occupied for the most part by persons who are familiar with them, this period may be extended to 15 seconds.  
Illuminated exit signs with normal and emergency electrical supply in locations as required by the Building Control Officer/Fire Officer.

FIRE ALARM SYSTEMS  
The building to be provided with a suitable electrically operated fire warning system with manual call points sited adjacent to exit doors and sufficient sounders to be clearly audible throughout the building.  
An electrically operated fire alarm system should comply with the recommendations of BS 5839:Pt1;2002-Fire detection and alarm systems for buildings, Code of practice for system design, installation and servicing. BS5839:Pt1 specifies four types of system:  
Type L- for the protection of life; subdivided into L1(systems installed throughout the protected building), L2(systems installed only in defined parts of the protected building) and L3(systems installed only for the protection of escape routes) NOTE: a type L2 system should normally include the coverage required of a type L3 system  
Type M- for manual alarm systems;  
Type P- for property protection; subdivided into P1(systems installed throughout the protected building) and P2(systems installed only in defined parts of the protected building)  
Type X- for multi occupancy buildings  
Call points for electrical alarm systems should comply with BS5839:Pt2-Specification for manual call points. These should be installed in accordance with BS5839:Pt1.  
NOTE: The Fire Alarm System specified for this building is an L2+ system which may be wireless. It should serve all areas of the building including loft spaces etc. as may be specified by the Fire Officer.

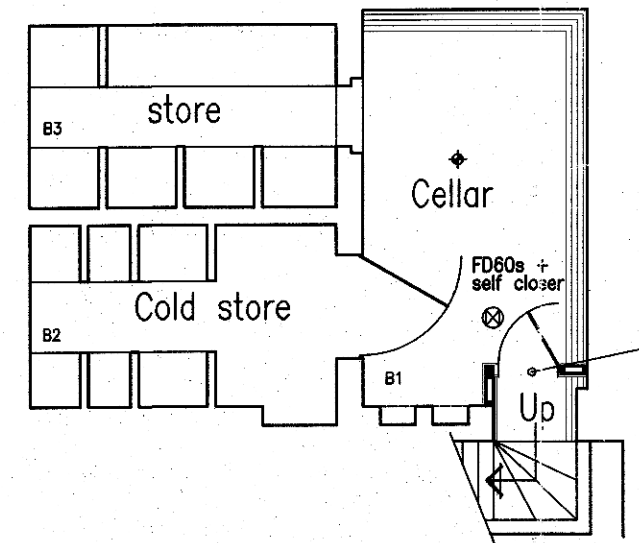


DOOR 22  
1:20

DOOR 32  
1:20



DOOR REF	LOCATION	REQUIRED SPECIFICATION	ALTERATIONS REQUIRED TO DOOR
1	En-suite bathroom F15	1/2 hour fire resisting with intumescent strip and self closer	No action required
2	Bedroom F14	1/2 hour fire resisting with intumescent strip and self closer	Paint with approved paint system
3	Bedroom F16	1/2 hour fire resisting with intumescent strip and self closer	Paint with approved paint system
4	Bedroom F17	1/2 hour fire resisting with intumescent strip and self closer	Paint with approved paint system
5	En-suite bathroom F18	1/2 hour fire resisting with intumescent strip and self closer	No action required
6	Hall/staircase F19	1/2 hour fire resisting with intumescent strip and self closer	Paint with approved paint system. Fit with magnetic catch linked to Fire Alarm
7	Stairs to attic	1/2 hour fire resisting with intumescent strip and self closer	Paint with approved paint system
8	Bathroom F10	1/2 hour fire resisting with intumescent strip and self closer	No action required
9	Bedroom F13	1/2 hour fire resisting with intumescent strip and self closer	Paint with approved paint system. Adjust door to fit frame at this.
10	Cup'd F11	1/2 hour fire resisting with intumescent strip	Paint with approved paint system
11	Cup'd	1/2 hour fire resisting with intumescent strip	Paint with approved paint system or replace with fire resistant panel door.
12	Bedroom F12	1/2 hour fire resisting with intumescent strip	Paint with approved paint system
13	Bedroom F13	1/2 hour fire resisting with intumescent strip and self closer	Fit suitable handle. Adjustment to top lip of door.
14	Bedroom F14	1/2 hour fire resisting with intumescent strip and self closer	Paint with approved paint system
15	Cup'd	1/2 hour fire resisting with intumescent strip	Paint with approved paint system or replace with fire resistant panel door.
16	En-suite F15	1/2 hour fire resisting with intumescent strip and self closer	No change
17	Bedroom F11	1/2 hour fire resisting with intumescent strip and self closer	Paint with approved paint system. Adjustment to bottom lip
18	Bedroom F13	1/2 hour fire resisting with intumescent strip and self closer	Paint with approved paint system
19	External door	1/2 hour fire resisting with intumescent strip and self closer	No action required
20	Dining Room G19	1/2 hour fire resisting with intumescent strip and self closer	Paint with approved paint system
21	Main reception G17	1/2 hour fire resisting with intumescent strip and self closer	Paint with approved paint system
22	Entrance hall	1/2 hour fire resisting with intumescent strip and self closer	New door to be fitted here (refer to drawing).
23	Billiard Room G14	1/2 hour fire resisting with intumescent strip and self closer	Paint with approved paint system
24	Bedroom G15	1/2 hour fire resisting with intumescent strip and self closer	Paint with approved paint system
25	Cloaks G11	1/2 hour fire resisting with intumescent strip and self closer	No change
26	Wc G12	1/2 hour fire resisting with intumescent strip and self closer	No change
27	Entrance hall	1/2 hour fire resisting with intumescent strip and self closer	Paint with approved paint system
28	Dining Room G19	1/2 hour fire resisting with intumescent strip and self closer	Paint with approved paint system
29	Cellar	1/2 hour fire resisting with intumescent strip and self closer	No change
30	Bedroom G10	1/2 hour fire resisting with intumescent strip and self closer	Glazed panel in door to have Pyroglass fitted to rear of door (refer to drawing). Adjustment to top lip of door
31	Cup'd G11	1/2 hour fire resisting with intumescent strip	Paint with approved paint system or replace with fire resistant panel door.
32	Kitchen G12	1/2 hour fire resisting with intumescent strip and self closer	New door to be fitted here (refer to drawing).



Basement Plan  
1:100

FIRE DOORS  
Fire doors are to be provided in locations as indicated and specified on plan. All fire doors to be identified by their performance under test to BS 476;Pt22 and to be fitted with an automatic self closing device except for fire doors to cupboards and to service ducts which are normally kept locked shut.  
All new fire doors are to be hung in strict accordance with manufacturers details and recommendations and be hung on 1.5 pairs of hinges complying to annex B of BS EN 1935.

Andrew Middleton  
23, Regent Street  
Gt Yarmouth  
NORFOLK  
NR30 1RL Tel. (01493) 858611

Project  
Filby Hall, Main Road, Filby,  
Gt Yarmouth, NORFOLK.  
Working drawings.

Client  
Mr & Mrs Rapley

Scale 1:100 Date July 2012

Dwg no. 749/1

Revision Rev A (Nov '12) / Building Reg. amendments. Rev B (Jan '13) / Fire alarm system to be an L1 system.